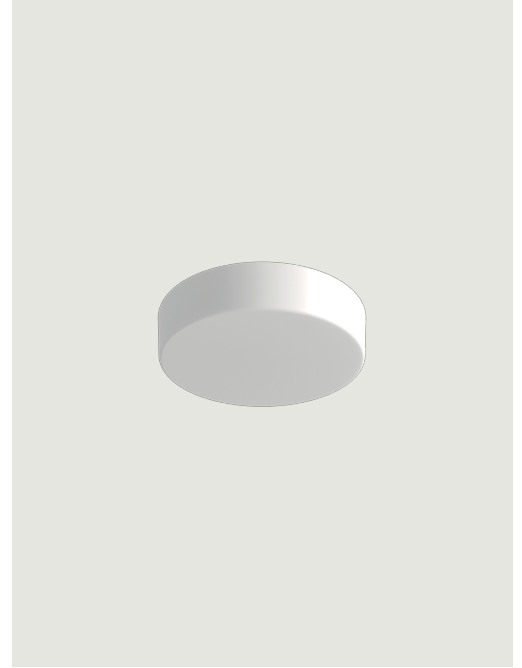


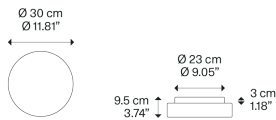
Make-Up,
Design by Studio Italia Design

Model Make-Up medium

Make-Up's design is inspired by fashion and beauty. A versatile blown glass lamp with a gentle shape, Make-Up dresses the wall or ceiling with light. Elegantly functional when used individually, it acquires a highly decorative appeal in lively compositions of different sizes and volumes.



Make-Up medium



Light source

LED
3000 K
16 W / 1800 lm
220–240 V
CRI 92
MacAdam 3–Step

LED included

Structure: Metal

● Matte White – 9016

Diffuser: Blown glass

● Frosted White

Code

150002

Net weight: 2.32 kg



IP30

Energy Saving

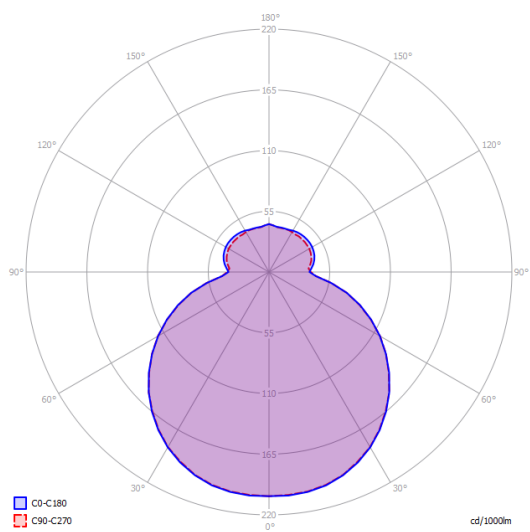
Dim Triac



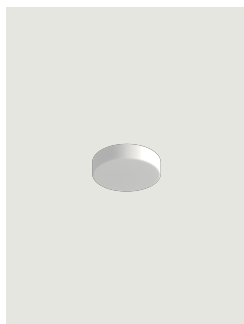
Make-Up medium

LED
3000 K
16 W / 1800 lm
220-240 V
CRI 92
MacAdam 3-Step

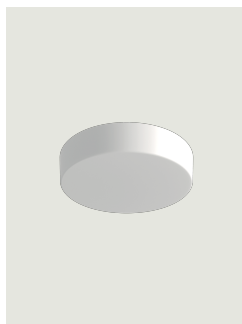
Polar diagram



Options of Make-Up



Make-Up small



Make-Up large